

9 Essential Elements for School Transformation Webinar Series



CALUMET PUBLIC SCHOOL DISTRICT 132

High Expectations Produce Positive Results

Presented By

Dr. Elizabeth Reynolds

Superintendent, Calumet School District



ENI

TRUSTED PARTNERSHIPS
FOR
STUDENT ACHIEVEMENT

PART 4: Alignment and Adaptation to the State Standards



Melissa Myers



Dr. Elizabeth Reynolds



Don Whittaker



Objectives

- Working collaboratively with the Board, staff, and community during the transformation process
- The importance of alignment on your curriculum, learning, and identifying instructional delivery gaps
- The importance of leveraging human capital and funding resources
- Defining your instructional goals



Poll Question

- Based on your results, how closely aligned would you say your curriculum is with your state standards ?
 - 25%
 - 50%
 - 75%
 - 100%



Calumet School District 132 Demographics



Background Information

- In 2007 Calumet's achievement was low
- None of the teachers were covering the same content at the same time
- General lack of belief in the student's abilities
- Assessment planning



Working Collaboratively

- Board
- Staff
- Community



Resources

- Developing human capital
- Strategic allocation of financial resources
 - Grants management
 - No formal plan for funding
 - Lack of accountability



Calumet Public School District 132 Goals

- Strengthen curriculum and instruction based on identified needs to improve achievement of all students.
- Strengthen and enhance the role of school site administrators.
- Improve student support services.
- Establish and maintain a recruitment, hiring, training and retention program in order that the most highly qualified staff is available to all students.



Calumet Public School District 132 Goals

- Develop a clear and concise spending and financial reporting plan to provide effective and efficient use of resources for student learning.
- Strengthen relationships at all levels within school district and the community.
- Improve Board organization, effectiveness and efficiency as a policy making body.





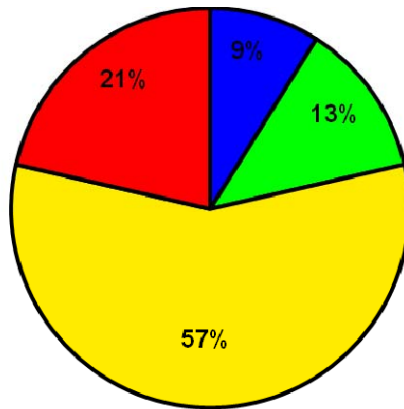
ENI TRUSTED PARTNERSHIPS
FOR
STUDENT ACHIEVEMENT

Alignment

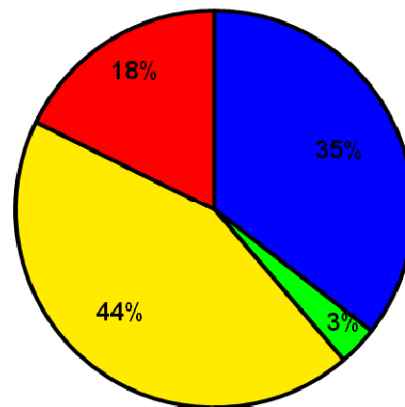
- In-depth alignment of all of Calumet's Reading and Math textbooks
- Comparison of all of the Illinois State Standards with the objectives in the text
- Identified where we were lacking
- Began an intense process of reworking our curriculum



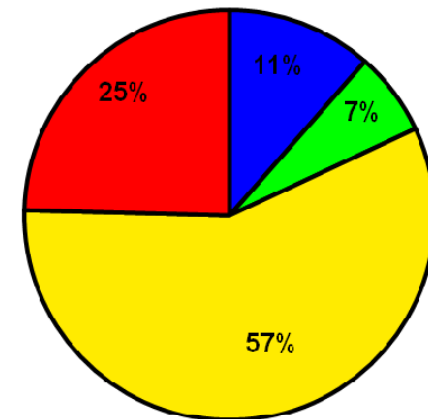
**Saxon Algebra 1/2: An Incremental Approach, 2004 Edition; Algebra,
2009 Edition; Geometry, 2009 Edition**
Correlated To: Illinois Math Assessment Framework Objectives



Grade 6



Grade 7



Grade 8



Absolute



High Partial



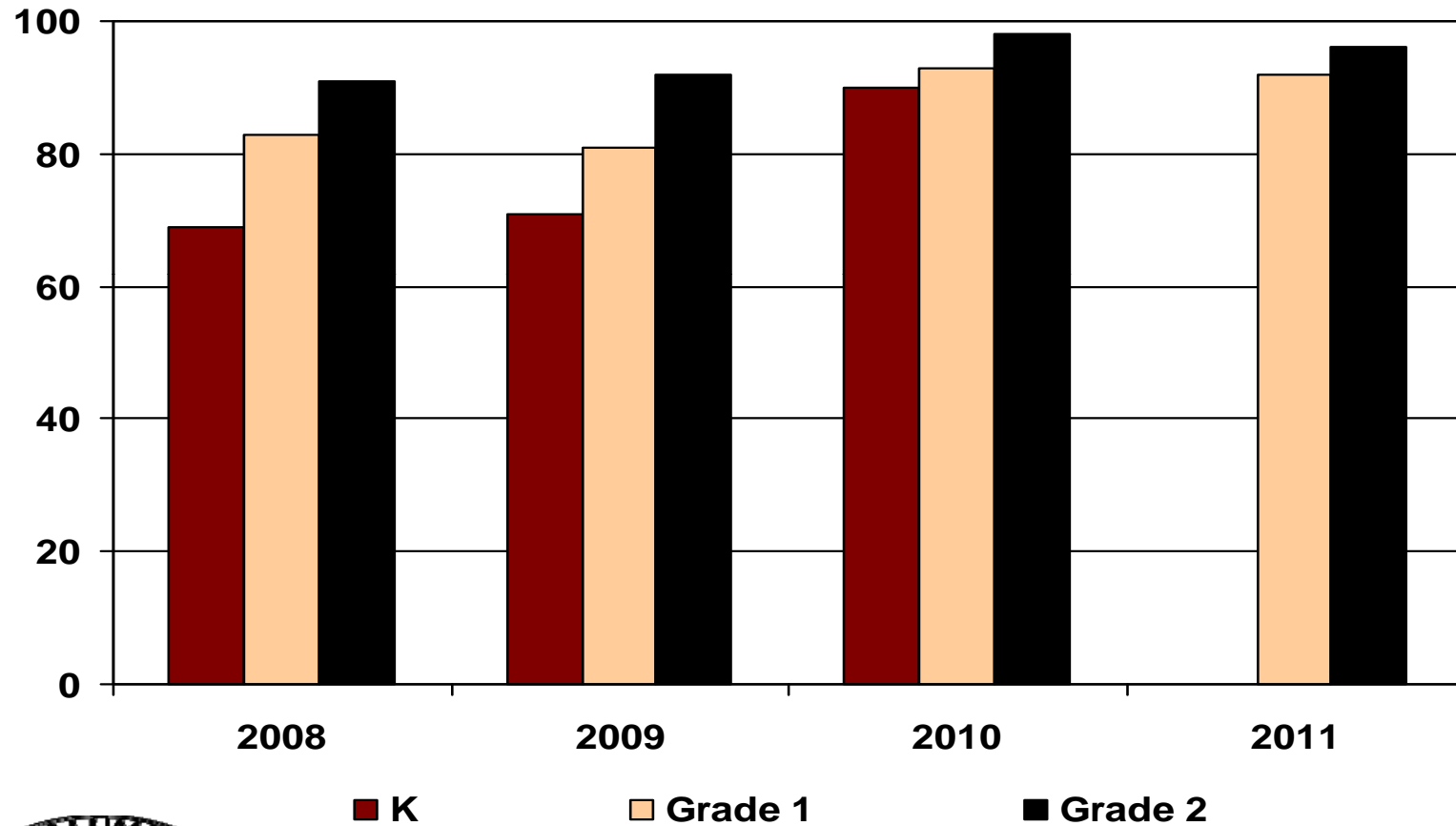
Low Partial



Fallout

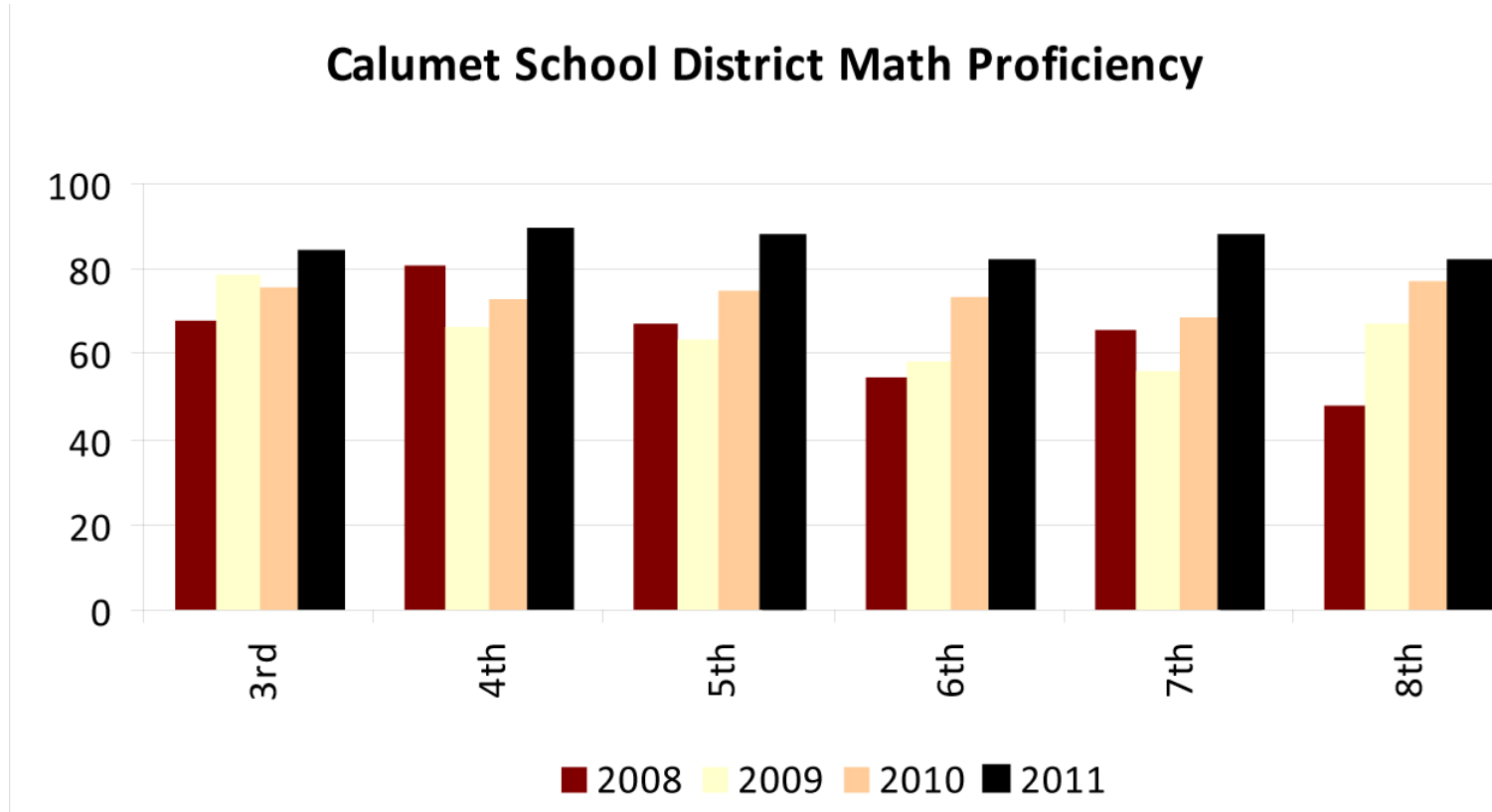


K-2 Incremental Assessment Data Math



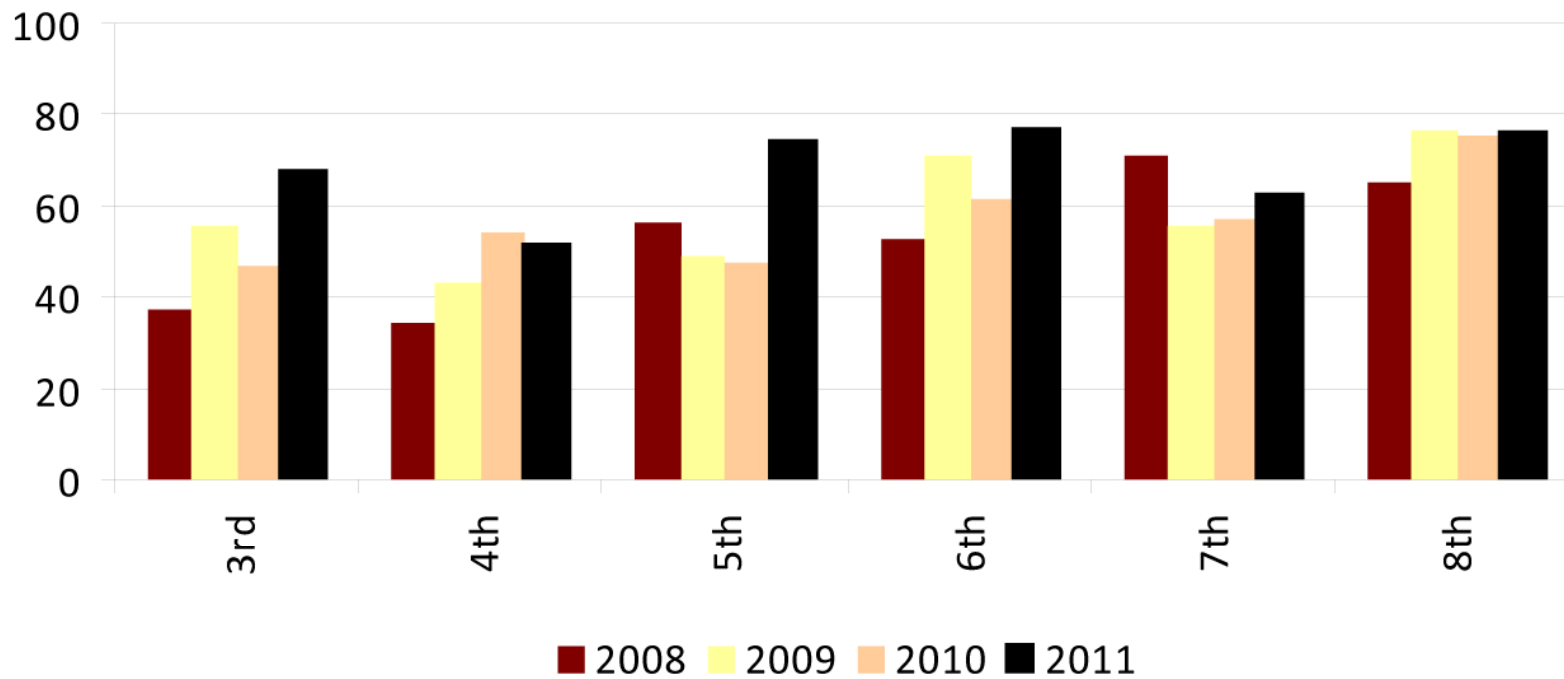
ISAT Results

Calumet School District Math Proficiency



ISAT Results

Calumet School District Reading Proficiency



Recognition

- National School Public Relation Award (NSPRA) Golden Achievement Awards
 - 2010 – Administrative Leadership Academy
 - 2011 – May We Educate You
- Four consecutive School District Financial Profile Awards from 2007–2010
- Board Members have presented at all state school board conferences in Illinois and have presented at the National School Board Association



Questions



Melissa Myers



Dr. Elizabeth Reynolds



Don Whittaker



Contact Info

- For more information on Calumet Public School District 132 contact Dr. Elizabeth Reynolds at: ereynolds@sd132.org
- For more information on ENI please contact Melissa Myers at [800.443.0544](tel:800.443.0544) or mmyers@evansnewton.com
- Visit EvansNewton.com

